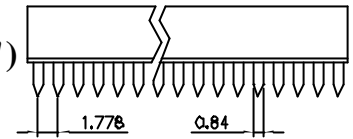


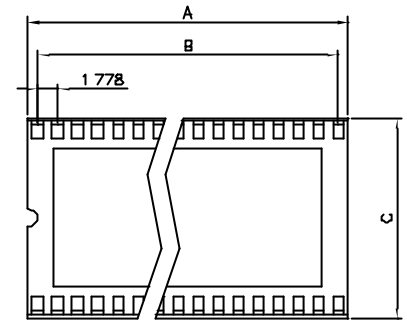
C127 Series

Dip IC Socket, 1.778mm(0.070")



Specifications:

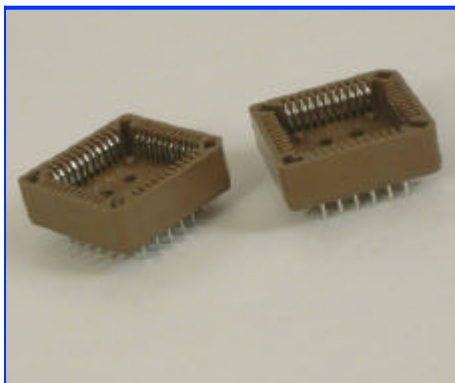
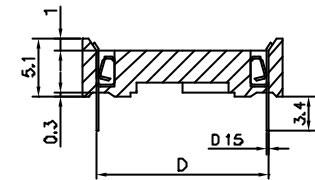
Contact Resistance: 30mΩ @ 100mADC
 Insulator Resistance: 1000MΩmin. @ 500VDC
 Current Rating: 1AMP
 Voltage: 500VAC For 1 minute
 Operating Temperature: -55°C ~ +105°C
 Contact: Brass or Phosphor Bronze, Stamped
 Housing: PPS, UL94V-0



Ordering Information

C127-648
 Series No. | No. of Pins:
 Row Spacing: | 24, 28, 42, 48, 52, 56, 64
 4-10.16mm | 56, 64
 6-15.24mm |
 7-19.05mm

Positions	A	B	C	D
24	21.46	19.56	12.65	10.16
28	25.01	23.11	12.65	10.16
42	37.46	35.56	17.78	15.24
48	42.79	40.89	17.78	15.24
52	46.35	44.45	17.78	15.24
56	49.91	48.01	17.78	15.24
64	57.04	55.12	21.54	19.05

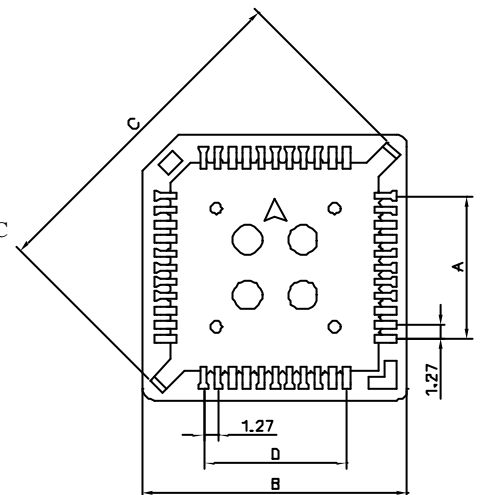


C128 Series

PLCC Socket, Dip Type

Specifications:

Contact Resistance: 30mΩ @ 100mADC
 Insulator Resistance: 1000MΩmin. @ 500VDC
 Current Rating: 1AMP
 Voltage: 500VAC For 1 minute
 Operating Temperature: -55°C ~ +105°C
 Contact: Phosphor Bronze, Stamped
 Housing: PPS(40% Glass Fiber), UL94V-0
 or PBT(30% Glass Fiber), UL94V-0



Ordering Information

C128-44BT
 Series No. | Contact Plating:
 No. of Pins: | T-Tinned
 28, 32, 44, 52, 68, 84 | Insulator Material:
 A-PPS
 B-PBT

Positions	A	B	C	D
28	7.62	18.10	22.20	12.70
32	7.62	18.80	25.70	10.16
44	12.70	23.50	29.80	17.78
52	15.24	26.00	32.64	20.32
68	20.32	30.20	40.10	25.40
84	25.40	35.20	46.90	30.48

