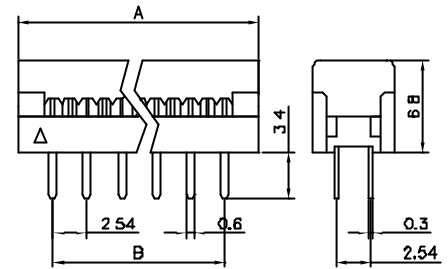


C123 Series

**Dip Plug, 2.54mm(0.100"),
Strain Relief**

Specifications:

Contact Resistance: 30mΩ @ 100mADC
 Insulator Resistance: 1000MΩmin. @ 500VDC
 Current Rating: 1AMP
 Voltage: 500VAC For 1 minute
 Operating Temperature: -55°C ~ +105°C
 Contact: Brass or Phosphor Bronze, Stamped
 Housing: PBT, UL94V-0



Ordering Information

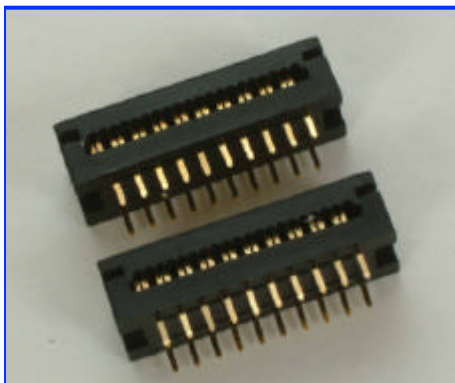
C123-26TK

Series No. | Insulator Colour:
 K-Black
 G-Gray

No. of Pins:
 10, 14, 16, 20, 26, 30
 34, 40, 50, 60, 64

Contact Plating:
 G- All Gold Plated
 T- Tinned
 C- Ni Plated Terminal
 & Gold Plated Dip Tail

Positions	A	B	Positions	A	B
10	17.80	10.16	34	48.40	40.64
14	22.82	15.24	40	55.92	48.26
16	25.40	17.78	50	68.72	60.96
20	30.52	22.86	60	81.42	73.66
26	38.12	30.48	64	86.38	78.74
30	43.32	35.56			

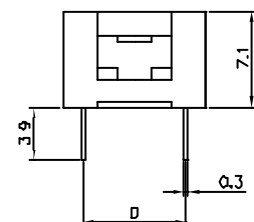
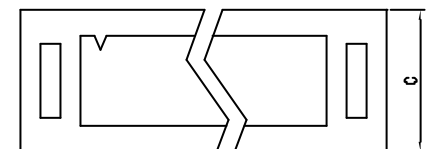
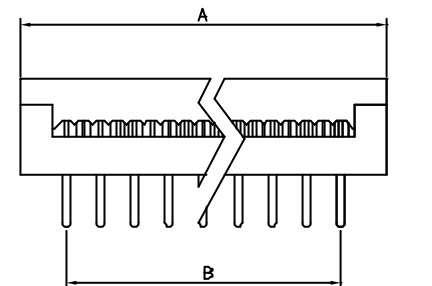


C124 Series

**Dip Plug, 2.54mm(0.100"),
Dual Row**

Specifications:

Contact Resistance: 30mΩ @ 100mADC
 Insulator Resistance: 1000MΩmin. @ 500VDC
 Current Rating: 1AMP
 Voltage: 500VAC For 1 minute
 Operating Temperature: -55°C ~ +105°C
 Contact: Brass or Phosphor Bronze, Stamped
 Housing: PBT, UL94V-0



Ordering Information

C124-24TK

Series No. | Insulator Colour:
 K-Black
 G-Gray

No. of Pins:
 14, 16, 18, 20, 24,
 28, 40

Contact Plating:
 G- All Gold Plated
 T- Tinned
 C- Ni Plated Terminal
 & Gold Plated Dip Tail

Positions	A	B	C	D
14	22.74	15.24	10.60	7.62
16	25.12	17.78	10.60	7.62
18	26.74	20.32	10.60	7.62
20	29.74	22.86	10.60	7.62
24	35.00	27.94	18.18	15.24
28	40.10	33.02	18.18	15.24
40	55.20	48.26	18.18	15.24