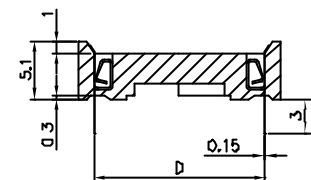
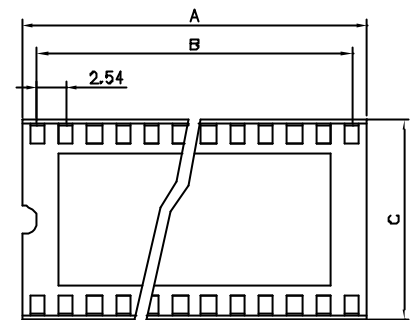
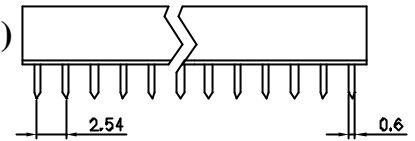


C125 Series

Dip IC Socket, 2.54mm (0.100")

Specifications:

Contact Resistance: 30mΩ @ 100mADC
 Insulator Resistance: 1000MΩmin. @ 500VDC
 Current Rating: 1AMP
 Voltage: 500VAC For 1 minute
 Operating Temperature: -55°C ~ +105°C
 Contact: Brass or Phosphor Bronze, Stamped
 Housing: PBT, UL94V-0



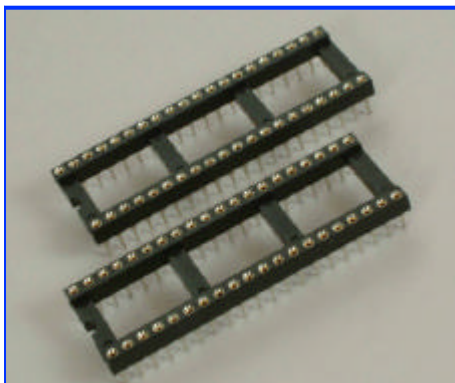
Ordering Information

C125-640-1

Series No. | Deviation:
 Row Spacing: 1 or 2,
 3-7.62mm | Only for 24 & 28 Pos.
 6-15.24mm

No. of Pins:
 06, 08, 14, 16, 18,
 20, 24, 28, 32, 40, 42

Pos.	A	B	C	D	Pos.	A	B	C	D
06	7.62	5.08	10.16	7.62	24-2	30.48	27.94	17.78	15.24
08	10.16	7.62	10.16	7.62	28-1	35.56	33.02	10.16	7.62
14	17.78	15.24	10.16	7.62	28-2	35.56	33.02	17.78	15.24
16	20.32	17.78	10.16	7.62	32	40.54	38.10	17.78	15.24
18	22.86	20.32	10.16	7.62	40	50.80	48.26	17.78	15.24
20	25.40	22.86	10.16	7.62	42	53.21	50.80	17.78	15.24
24-1	30.48	27.94	10.16	7.62					

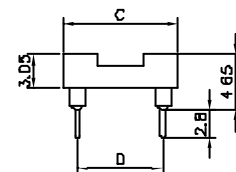
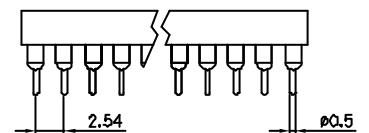
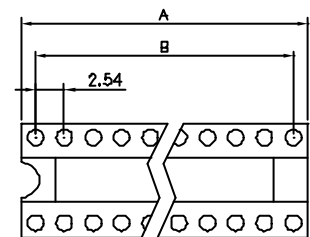


C126 Series

Dip IC Socket, 2.54mm (0.100"), Round Pin

Specifications:

Contact Resistance: 30mΩ @ 100mADC
 Insulator Resistance: 1000MΩmin. @ 500VDC
 Current Rating: 1AMP
 Voltage: 500VAC For 1 minute
 Operating Temperature: -55°C ~ +105°C
 Contact: Brass or Phosphor Bronze, Stamped
 Housing: PBT, UL94V-0



Ordering Information

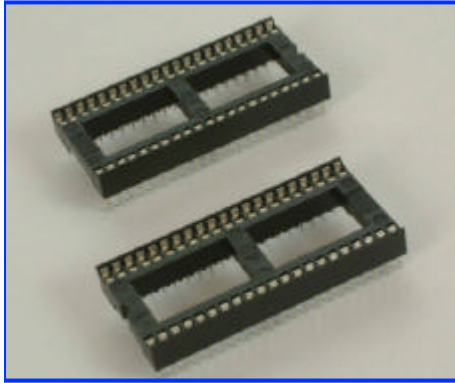
C126-640RG-1

Series No. | Deviation:
 Row Spacing: 1 or 2,
 3-7.62mm | Only for 24 & 28 Pos.
 6-15.24mm

No. of Pins:
 06, 08, 14, 16, 18,
 20, 24, 28, 32, 40, 42

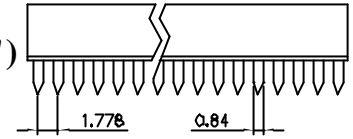
Round Pin | Contact Plating:
 G-All Gold Plated
 T-Tinned Tail & Gold Plated Hole

Pos.	A	B	C	D	Pos.	A	B	C	D
06	7.62	5.08	10.16	7.62	24-2	30.48	27.94	17.78	15.24
08	10.16	7.62	10.16	7.62	28-1	35.56	33.02	10.16	7.62
14	17.78	15.24	10.16	7.62	28-2	35.56	33.02	17.78	15.24
16	20.32	17.78	10.16	7.62	32	40.54	38.10	17.78	15.24
18	22.86	20.32	10.16	7.62	40	50.80	48.26	17.78	15.24
20	25.40	22.86	10.16	7.62	42	53.21	50.80	17.78	15.24
24-1	30.48	27.94	10.16	7.62					



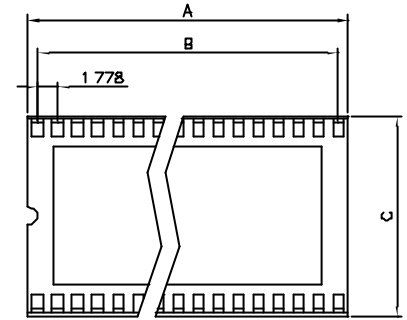
C127 Series

Dip IC Socket, 1.778mm(0.070")



Specifications:

Contact Resistance: 30mΩ @ 100mADC
 Insulator Resistance: 1000MΩmin. @ 500VDC
 Current Rating: 1AMP
 Voltage: 500VAC For 1 minute
 Operating Temperature: -55°C ~ +105°C
 Contact: Brass or Phosphor Bronze, Stamped
 Housing: PPS, UL94V-0

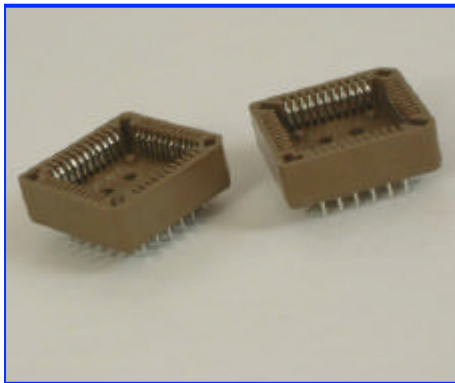
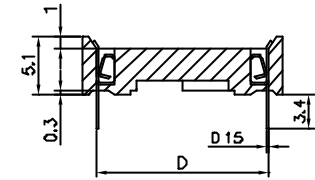


Ordering Information

C127-648

Series No. | No. of Pins:
 Row Spacing: | 24, 28, 42, 48, 52, 56, 64
 4-10.16mm | 56, 64
 6-15.24mm |
 7-19.05mm

Positions	A	B	C	D
24	21.46	19.56	12.65	10.16
28	25.01	23.11	12.65	10.16
42	37.46	35.56	17.78	15.24
48	42.79	40.89	17.78	15.24
52	46.35	44.45	17.78	15.24
56	49.91	48.01	17.78	15.24
64	57.04	55.12	21.54	19.05

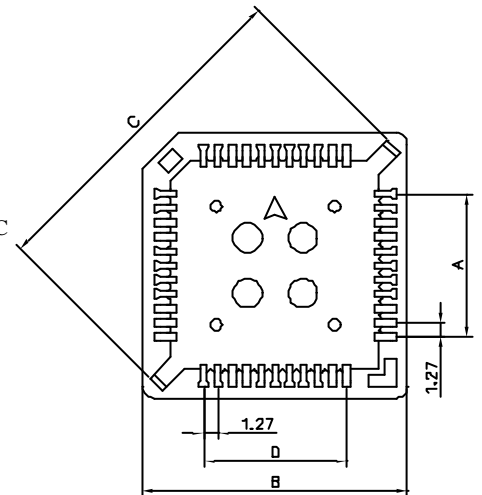


C128 Series

PLCC Socket, Dip Type

Specifications:

Contact Resistance: 30mΩ @ 100mADC
 Insulator Resistance: 1000MΩmin. @ 500VDC
 Current Rating: 1AMP
 Voltage: 500VAC For 1 minute
 Operating Temperature: -55°C ~ +105°C
 Contact: Phosphor Bronze, Stamped
 Housing: PPS(40% Glass Fiber), UL94V-0
 or PBT(30% Glass Fiber), UL94V-0



Ordering Information

C128-44BT

Series No. | Contact Plating:
 No. of Pins: | T-Tinned
 28, 32, 44, 52, 68, 84 | Insulator Material:
 A-PPS
 B-PBT

Positions	A	B	C	D
28	7.62	18.10	22.20	12.70
32	7.62	18.80	25.70	10.16
44	12.70	23.50	29.80	17.78
52	15.24	26.00	32.64	20.32
68	20.32	30.20	40.10	25.40
84	25.40	35.20	46.90	30.48

